

Adenosine

By Jim Moss

Indications:

Treatment of narrow-complex SVT which is due to re-entry involving the SA or AV node. Can be used as a diagnostic maneuver to temporarily slow down unknown tachycardias.

Precautions/Contraindications:

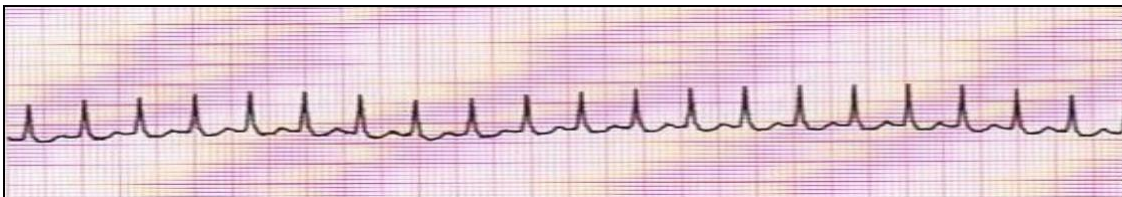
Brief side effects: temporary asystole/bradycardia, chest pain/tightness, ventricular ectopy, flushing. May cause hypotension/deterioration for polymorphic wide-complex VT.

Dosing:

Adults—6mg first dose, 12mg second dose, *no third dose per 2010 AHA guidelines
Pediatrics—0.1 mg/kg first dose (max 6mg), 0.2 mg/kg second dose (max 12mg)

Scenario:

50 y/o female complains of rapid heart rate and palpitations while seated at rest. Patient denies chest pain and dyspnea. ECG displays the following rhythm:



Plan of care:

- Vital Signs/12-Lead ECG
- Oxygen as needed
- Place patient supine on stretcher
- Proximal large-bore IV access
- Rapid IVP of Adenosine—6 mg with 20cc NS flush (print ECG strip)
- Repeat in 1-2 minutes with 12 mg, if needed.

If unable to convert SVT to NSR and unstable symptoms develop, proceed immediately to synchronized cardioversion—50 J, 100 J, 150 J